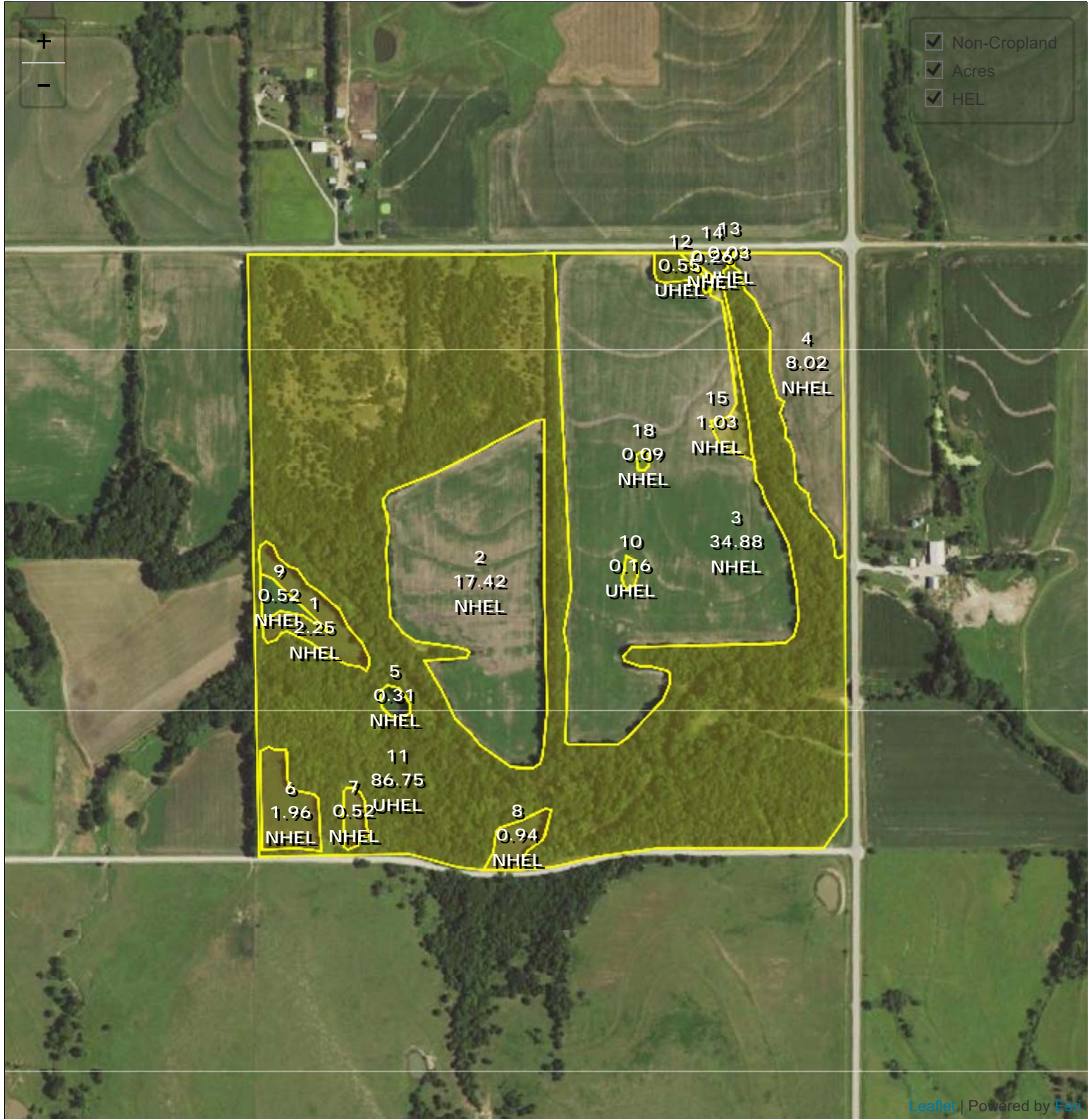


USDA Coffey County, Kansas



Common Land Unit
 Cropland Non-cropland CRP

Wetland Determination Identifiers
 ● Restricted Use
 ▼ Limited Restrictions
 ■ Exempt from Conservation Compliance Provisions

Farm **5551**
 Tract **1124**

2019 Crop Year



Tract 1 of 1

United States Department of Agriculture (USDA) Farm Service Agency (FSA) maps are for FSA Program administration only. This map does not represent a legal survey or reflect actual ownership; rather it depicts the information provided directly from the producer and/or National Agricultural Imagery Program (NAIP) imagery. The producer accepts the data 'as is' and assumes all risks associated with its use. USDA-FSA assumes no responsibility for actual or consequential damage incurred as a result of any user's reliance on this data outside FSA Programs. Wetland identifiers do not represent the size, shape, or specific determination of the area. Refer to your original determination (CPA-026 and attached maps) for exact boundaries and determinations or contact USDA Natural Resources Conservation Service (NRCS).

Kansas
Coffey
Report ID: FSA-156EZ

U.S. Department of Agriculture
Farm Service Agency
Abbreviated 156 Farm Record

FARM: 5551
Prepared: 6/20/19 12:10 PM
Crop Year: 2019
Page: 1 of 2

DISCLAIMER: This is data extracted from the web farm database. Because of potential messaging failures in MIDAS, this data is not guaranteed to be an accurate and complete representation of data contained in the MIDAS system, which is the system of record for Farm Records.

Operator Name	Farm Identifier	Recon Number
		2007 20031 65

Farms Associated with Operator:
107, 250, 504, 1177, 1298, 1785, 1998, 2517, 4536, 5091, 5395, 5578, 5783, 5877, 6405, 6431, 6742, 7343

ARC/PLC G//F Eligibility: Eligible

CRP Contract Number(s): 11121, 11235

Farmland	Cropland	DCP Cropland	WBP	WRP/EWP	CRP Cropland	GRP	Farm Status	Number of Tracts
155.69	67.08	67.08	0.0	0.0	5.67	0.0	Active	1
State Conservation	Other Conservation	Effective DCP Cropland	Double Cropped	MPL/FWP				
0.0	0.0	61.41	0.0	0.0				

ARC/PLC			
ARC-IC	ARC-CO	PLC	PLC-Default
NONE	WHEAT, SORGH	SOYBN	NONE

Crop	Base Acreage	CTAP Tran Yield	PLC Yield	CCC-505 CRP Reduction
WHEAT	30.0		29	0.0
GRAIN SORGHUM	31.41		51	0.0
Total Base Acres:	61.41			

Tract Number: 1124 **Description:** 22 14 SE4 8-22-14
FSA Physical Location : Coffey, KS **ANSI Physical Location:** Coffey, KS
BIA Range Unit Number:
HEL Status: NHEL: no agricultural commodity planted on undetermined fields
Wetland Status: Wetland determinations not complete
WL Violations: None

Farmland	Cropland	DCP Cropland	WBP	WRP/EWP	CRP Cropland	GRP
155.69	67.08	67.08	0.0	0.0	5.67	0.0
State Conservation	Other Conservation	Effective DCP Cropland	Double Cropped	MPL/FWP		
0.0	0.0	61.41	0.0	0.0		
Crop	Base Acreage	CTAP Tran Yield	PLC Yield	CCC-505 CRP Reduction		
WHEAT	30.0		29	0.0		
GRAIN SORGHUM	31.41		51	0.0		
Total Base Acres:	61.41					

Kansas
Coffey

U.S. Department of Agriculture
Farm Service Agency

FARM: 5551
Prepared: 6/20/19 12:10 PM
Crop Year: 2019
Page: 2 of 2

Report ID: FSA-156EZ

Abbreviated 156 Farm Record

DISCLAIMER: This is data extracted from the web farm database. Because of potential messaging failures in MIDAS, this data is not guaranteed to be an accurate and complete representation of data contained in the MIDAS system, which is the system of record for Farm Records.
